



**MOTREC™**  
ELECTRIC VEHICLES FOR INDUSTRY

**MOTREC INTERNATIONAL INC.**  
Gene H. Kruger Industrial Park  
200 Des PME Street  
Sherbrooke, Quebec  
J1C 0R2 CANADA

TF 1-866-846-3558  
1-819-846-2010  
1-819-846-3050  
www.motrec.com

### Description:

The E-290 combines the stability of a 4-wheel tow tractor with the maneuverability of a 3-wheeler thanks to its exclusive steering design.

Low maintenance cost is guaranteed by a fan-cooled motor, rugged automotive differential and large disc brakes.

Mid-shift interruptions are avoided thanks to its industrial battery.

Round-the-clock operation is easy with the roll-out battery option – no expensive battery lifting equipment is required.

### Benefits:

**SAFETY.** Four-wheel stability.

**ENDURANCE.** Powerful fan-cooled motor.

**RUGGEDNESS.** Automotive ring gear differential, axle shafts on roller bearings.

**DEPENDABILITY.** Self-adjusting hydraulic brakes, 11" automotive discs.

**PRODUCTIVITY.** Industrial battery, longer running time.

**ERGONOMICS.** Automotive steering wheel.

**BATTERY EFFICIENCY.** 36V/12V converter to equalize cells, extend battery life.

**DURABILITY.** All-steel construction, 1/4" plate body, tubular frame.

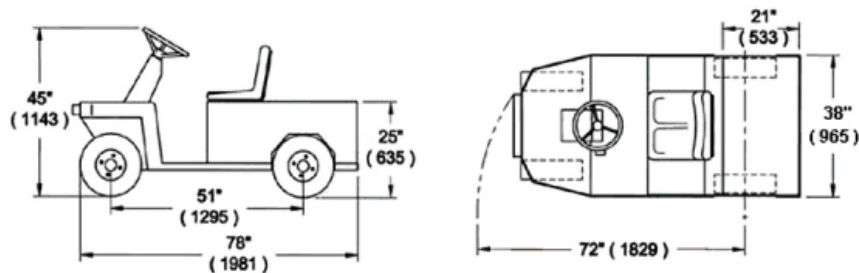
**LOW COST OPTIONAL ROLL-OUT BATTERY INSTALLATION.**

## E-290



Vehicle shown may have optional accessories

### Dimensions:



## Standard Equipment & Features

<b>Type:</b> 36-Volt Electric Tow Tractor (4 wheels)	<b>Brakes:</b> Rear wheel hydraulic brakes, large 11
<b>Capacity:</b> 10,000 lb. (4545 kg)	<b>Steering:</b> Automotive steering wheel
<b>Speed:</b> 8 mph (14 km/h)	<b>Suspension:</b> Dual coil springs & shock absorbers on rear
<b>Motor:</b> 10 hp Fan cooled shunt motor	<b>Seats:</b> Bucket seat on slide adjusters
<b>Controller:</b> Electronic speed controller	<b>Indicators:</b> Battery status indicator
<b>Battery:</b> No Battery Included	<b>Safety features:</b> Reverse alarm, deadman seat switch, Horn
<b>Charger:</b> No Charger Included	<b>Lights:</b> Headlight, tail/brake light
<b>Transmission:</b> GOODYEAR Eagle Synchronous drive	<b>Accessories:</b> 36V/12V converter for 12-volt accessories, Bolt-on bumpers and rear wheel guards
<b>Drive axle:</b> Differential with automotive ring gear	<b>Wheels:</b> 4.8x8 LRC pneumatic tires
	<b>Unit weight:</b> 1,100 lb. (500kg) without battery
	<b>Certifications:</b> Conforms to requirements for type E, UL 583 and ANSI B56.9
<b>Notes:</b> *includes passenger weight of 200 lbs. Specifications and standard equipment are subject to change without notice.	



### About Motrec

- [History](#)
- [President's Message](#)
- [Motrec Commitment](#)
- [Product Certifications](#)
- [Employment Opportunities](#)
- [Our Team](#)
- [Contact Us](#)

### Vehicle Selection

- [Burden Carriers](#)
- [Personnel Carriers](#)
- [Trams](#)
- [Stock Chasers](#)
- [Tow Tractors](#)
- [Gas-Powered Vehicles](#)
- [Utility Vehicles](#)
- [Custom Vehicles](#)

### Information

- [Motrec Parts](#)
- [End-Users](#)
- [Become a Dealer](#)
- [Newsletters](#)
- [Information Request Form](#)
- [Vehicle Application Form](#)
- [Dealer Login](#)